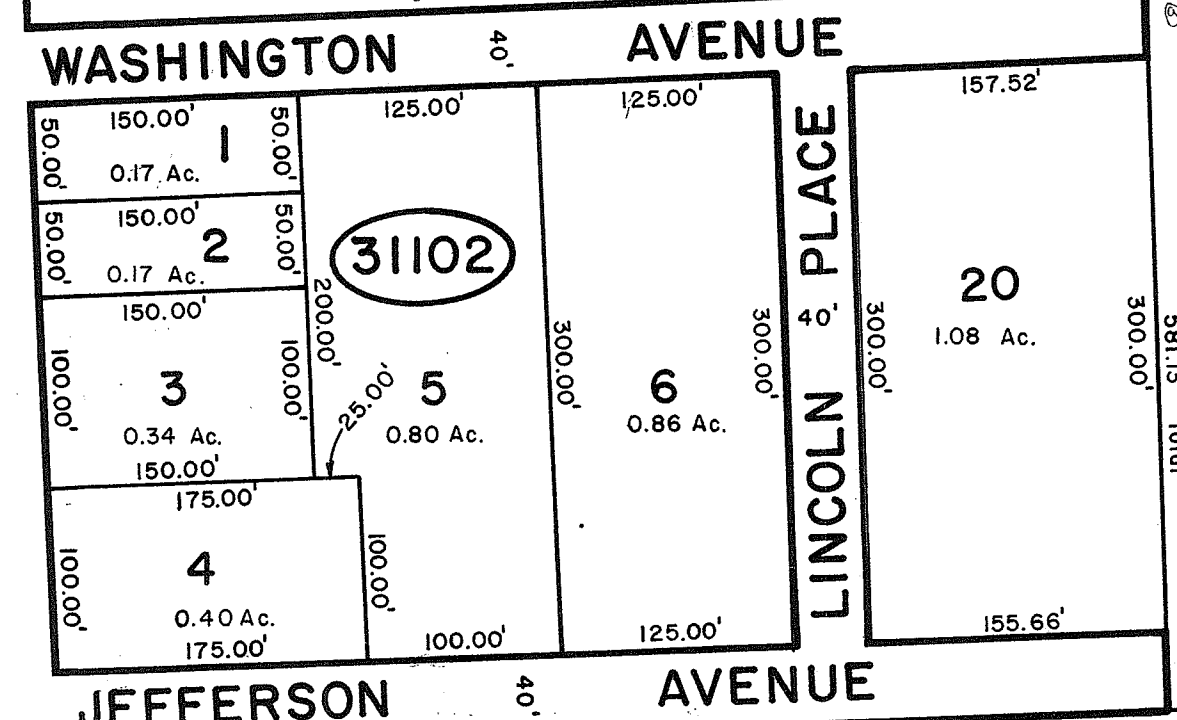
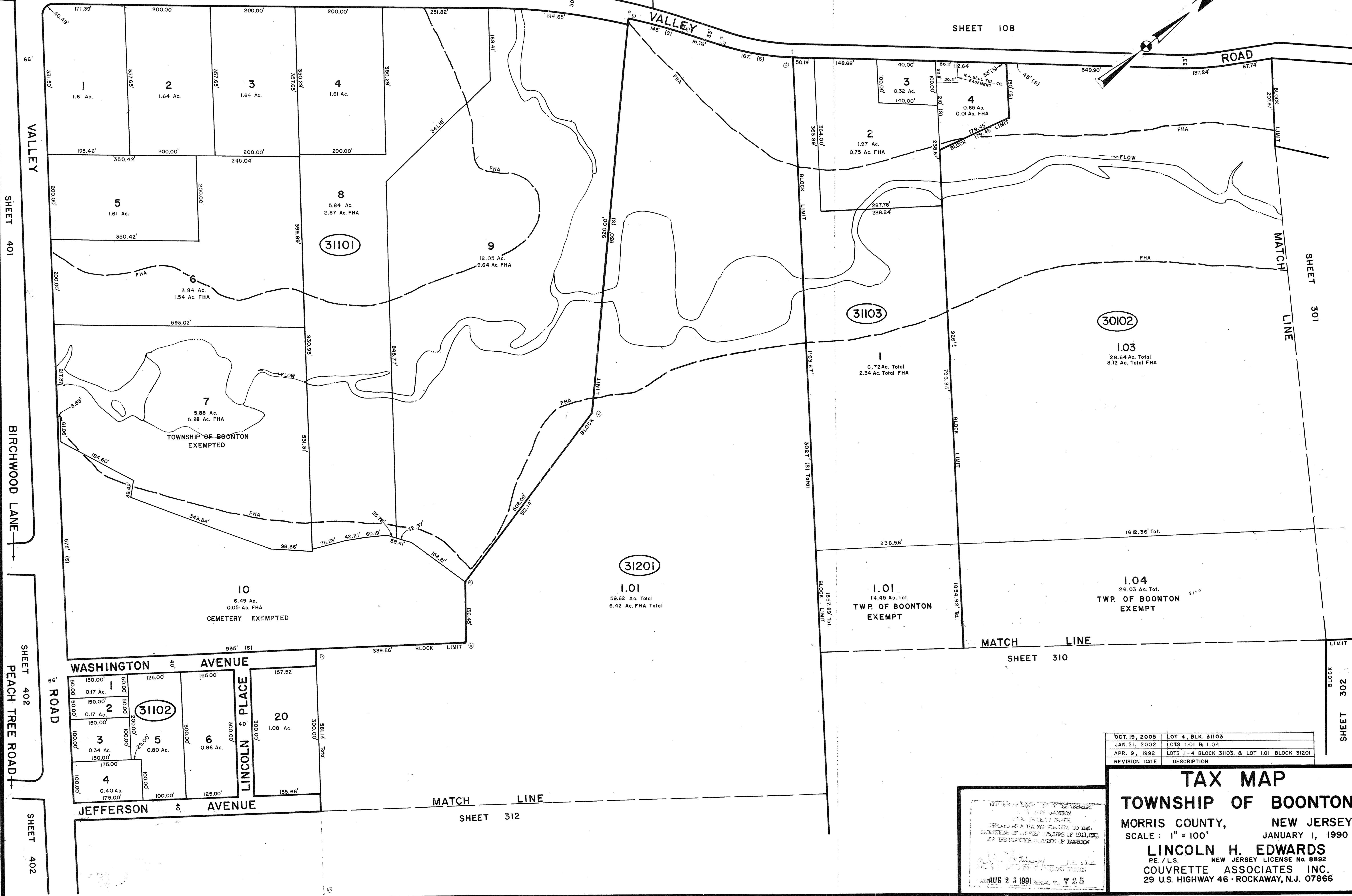
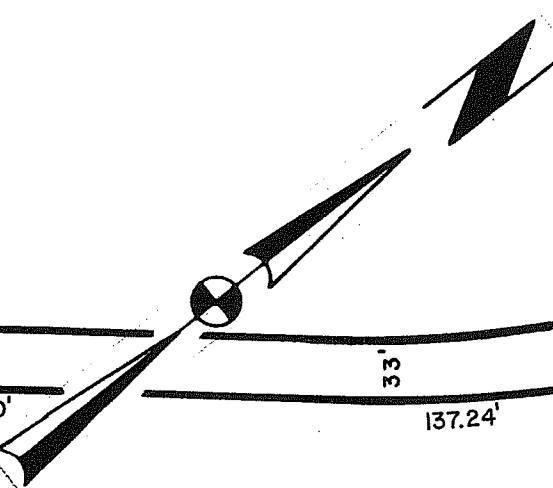


CANTERBURY ROAD

SHEET 109

SHEET 108

ROAD



OCT. 19, 2005	LOT 4, BLK. 31103
JAN. 21, 2002	LOTS 1.01 & 1.04
APR. 9, 1992	LOTS 1-4 BLOCK 31103, & LOT 1.01 BLOCK 31201
REVISION DATE	DESCRIPTION

TAX MAP
TOWNSHIP OF BOONTON
 MORRIS COUNTY, NEW JERSEY
 SCALE: 1" = 100'
 JANUARY 1, 1990
LINCOLN H. EDWARDS
 RE./L.S. NEW JERSEY LICENSE No. 8892
COUVRETTE ASSOCIATES INC.
 29 U.S. HIGHWAY 46 - ROCKAWAY, N.J. 07866

NOTICE: THIS MAP WAS PREPARED BY THE TOWNSHIP OF BOONTON UNDER THE SUPERVISION OF THE TOWNSHIP ENGINEER AND THE TOWNSHIP CLERK. IT IS HEREBY CERTIFIED THAT THE INFORMATION CONTAINED HEREIN IS TRUE AND CORRECT TO THE BEST OF THEIR KNOWLEDGE AND BELIEF. THE TOWNSHIP ENGINEER AND CLERK ARE NOT RESPONSIBLE FOR THE ACCURACY OF THE INFORMATION CONTAINED HEREIN.

AUG 23 1991